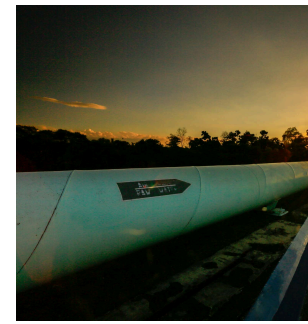


# PT KRAKATAU TIRTA INDUSTRI COMPANY BROCHURE



[www.krakatautirta.co.id](http://www.krakatautirta.co.id)

**An Integrated  
Water Provider Company**



## KTI at a Glance

PT Krakatau Tirta Industri (KTI) was established on February 28, 1996 as part of PT Krakatau Steel (Persero) Tbk. (Steel Company in Indonesia) group, with 99,9% share ownership by PT Krakatau Steel (Persero) Tbk. and 0,01% by PT Krakatau Industrial Estate Cilegon (PT KIEC). In 2023, the Company underwent a change in shareholder structure, becoming PT Krakatau Steel (Persero) Tbk. at 0,01%, PT Krakatau Sarana Infrastruktur (formerly PT Krakatau Industrial Estate Cilegon/KIEC) at 50,99%, and PT Chandra Daya Investasi (PT Chandra Asri Pacific Tbk group) at 49%.

Before becoming a separate entity from the parent company, KTI was a support unit for PT Krakatau Steel (Persero) Tbk. operational activities which specifically handled the provision of clean water since 1978. Along with its development, clean water was initially only used for the needs of PT Krakatau Steel (Persero) Tbk. then also distributed to meet the needs of industry and citizens in Cilegon.

Since 2011, KTI has continued to develop its business in accordance with developments in market needs both in Cilegon and other regions in Indonesia. With a strong commitment to always maintaining quality, quantity and continuity of service, KTI has now developed as a provider of clean water, demineralized water, desalinated water, and waste water treatment services using both conventional and membrane technology with strict standards.

## Why KTI?

**>40 years  
experience in water  
treatment**

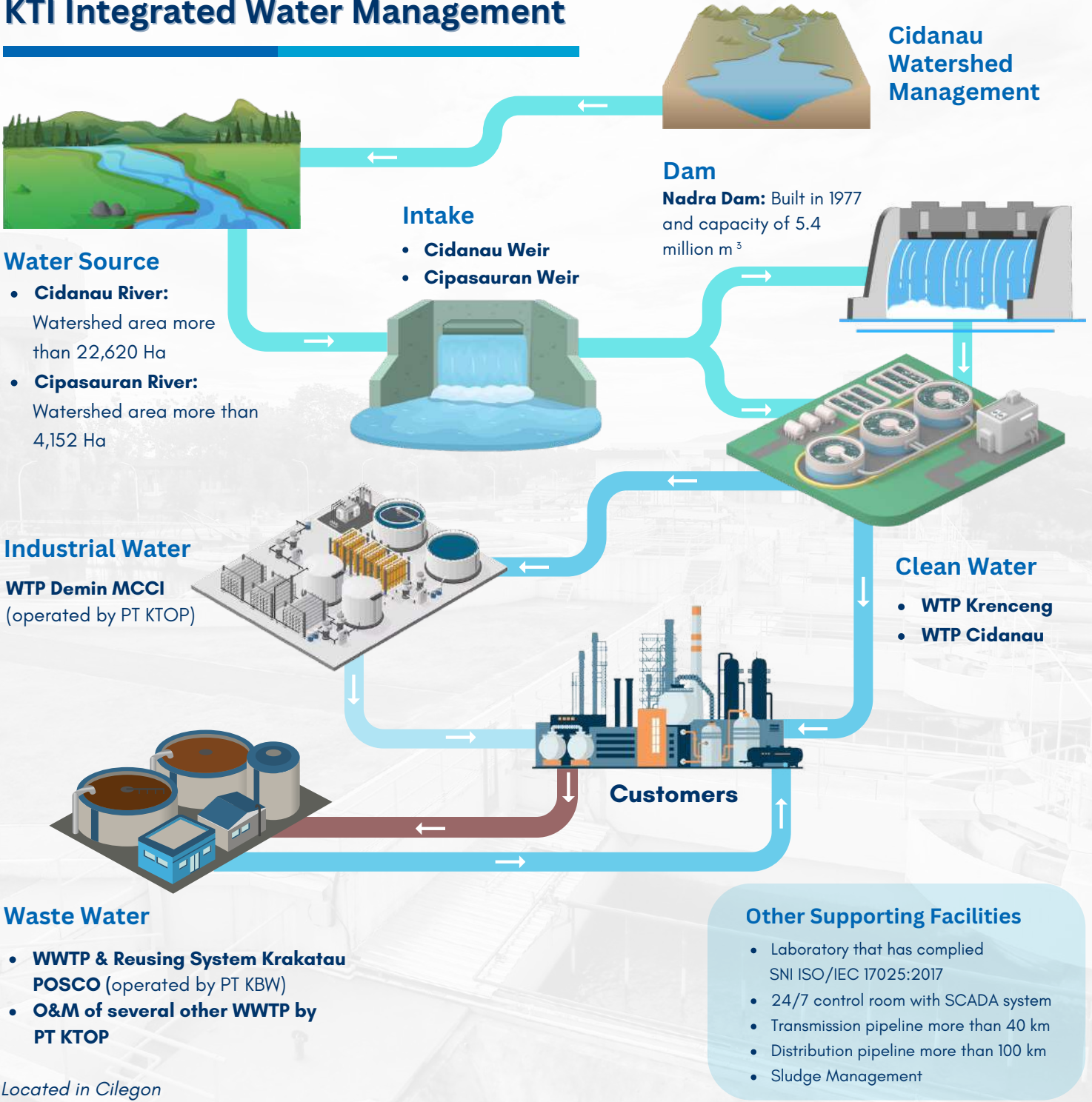
**>3.000 lps total  
water treatment  
plant capacity**

**Provide a variety of  
products and  
services with various  
business schemes**

**<0,75%  
production  
losses**

**<2% water  
distribution  
losses with 24/7  
continuity**

# KTI Integrated Water Management



## Other Business Development



Drinking Water Supply System (SPAM) Gresik (operated by PT PPKT)



Desal-Demin Water Plant PT Amman Mineral Industri West Sumbawa Regency (operated by PT KTOP)



WRP KS Office Jakarta (operated by PT KTOP)

*Located outside Cilegon*

# Environmental, Social, and Governance (ESG)



## Integrated Watershed Management & Environmental Services

KTI collaborates with the Cidanau River Watershed Communication Forum (FKDC) in managing the Cidanau Watershed from upstream to downstream in an integrated manner involving upstream as service providers and downstream as users through Payment Environment Services (PES). KTI is also committed to preserving and reforestation Rawa Danau Nature Reserves (CARD). Currently ± 275 Ha of the Cidanau River Basin has implemented Environmental Services Payments with a total payment of ± 4.5 Billion for the period 2005 to the present.

## Joint program with BKSDA

KTI carries out various programs with the Natural Resources Conservation Agency (BKSDA), including the formation of conservation cadres, regional security patrols, ecosystem restoration, facility improvements, monitoring water discharge, planting one million trees by 2025.



## Certifications & Awards



ISO 9001:2015

ISO 14001:2015

ISO 17025:2017

Dam Operation License

SMK3

Zero Accident

Indonesia Green Awards (2012)

Kalpataru (2013)

## Subsidiaries & Affiliates



### Cilegon Office

Ir. Sutami Street , Kebonsari, Citangkil,  
Cilegon, Banten  
Indonesia 42442

Phone: +62 254 311 206

[www.krakatautirta.co.id](http://www.krakatautirta.co.id)

### Jakarta Office

Krakatau Steel Building,  
Gatot Subroto Street Kav 54 Iv 9,  
South Jakarta, Indonesia 12950

Phone: +62 21 522 1249

[krakatautirta](https://www.instagram.com/krakatautirta)

