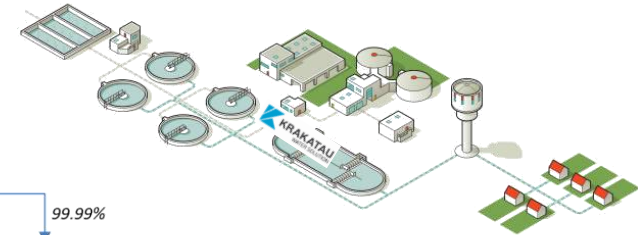
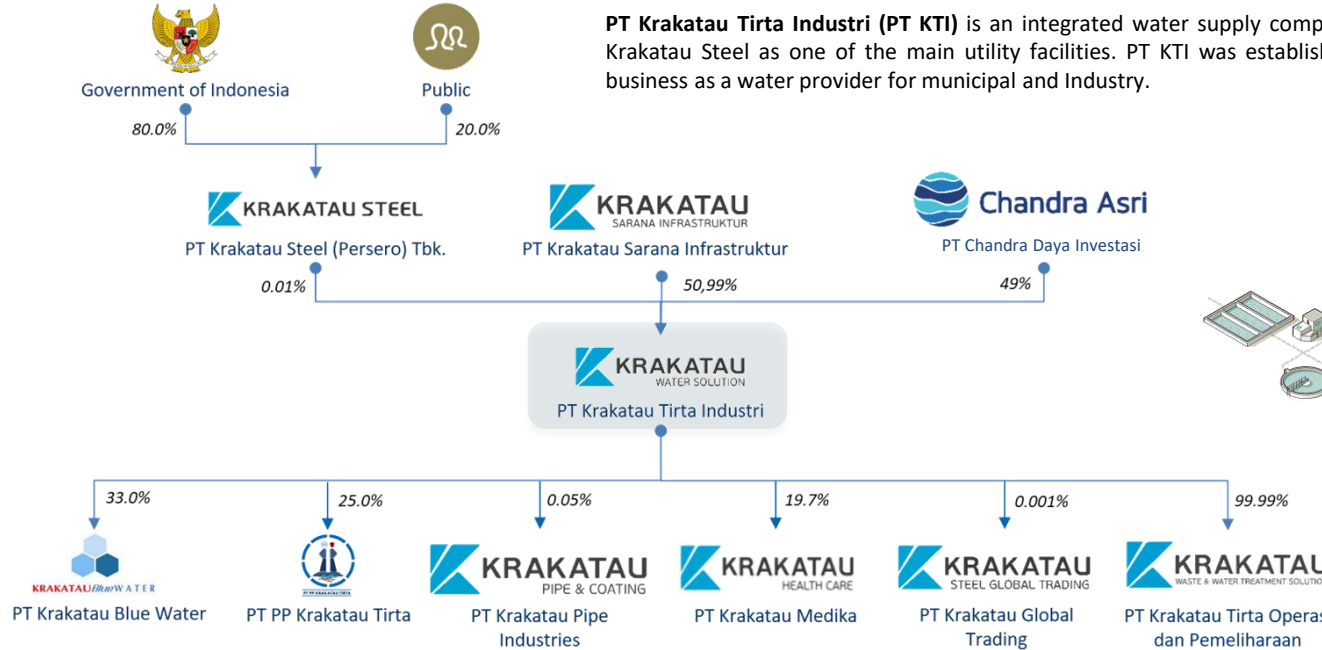


Company Profile of PT Krakatau Tirta Industri

KTI AT A GLANCE



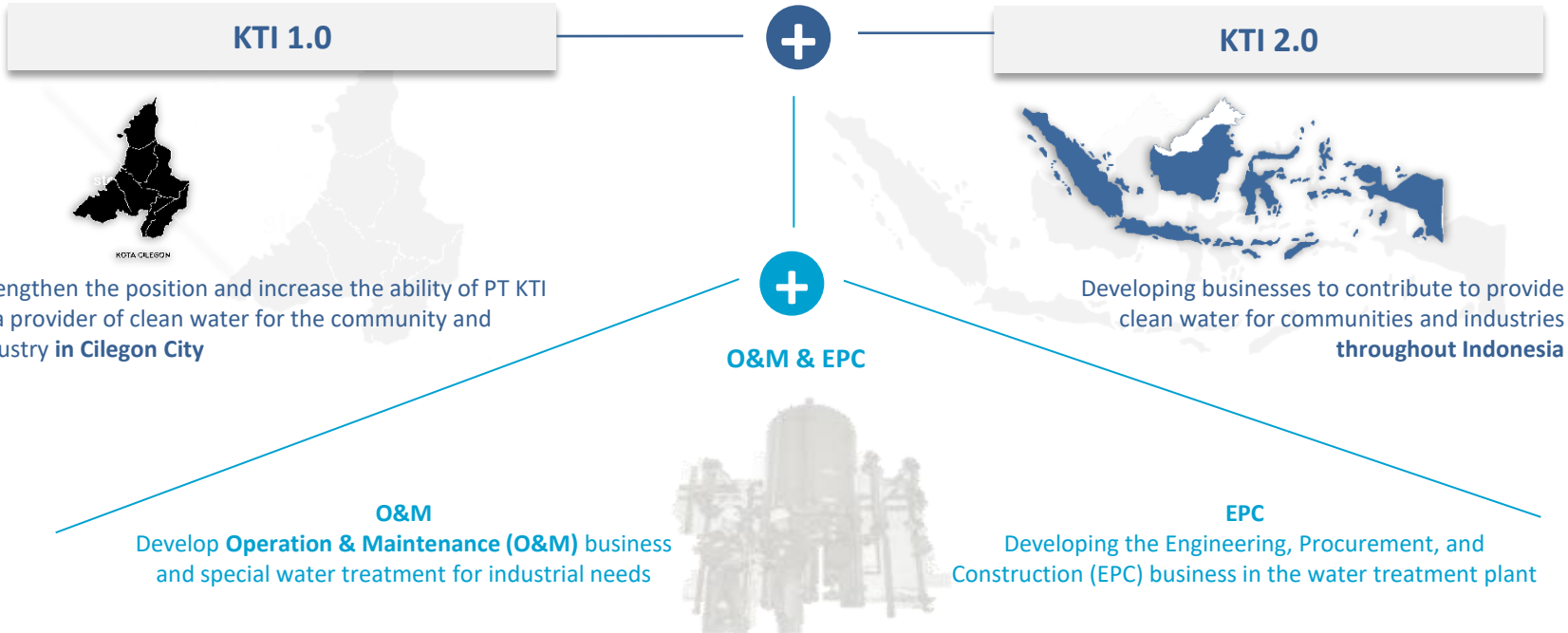
VISION	<i>Become a competitive, profitable and trustworthy corporation</i>
MISSION	<ol style="list-style-type: none"> 1. <i>Providing water and solutions for industry and society by prioritizing environmental harmony</i> 2. <i>Realizing Productive and Efficient Operational Performance to produce profitable quality products and services</i> 3. <i>Develop the water business through mutually beneficial collaboration</i>

AKHLAK

AMANAH KOMPETEN HARMONIS
LOYAL ADAPTIF KOLABORATIF

WHAT KTI HAVE & DO

Raw Water Source	Technology	Product	Business Scheme
<ul style="list-style-type: none"> • Brackish Water • Waste Water • Sea Water 	<ul style="list-style-type: none"> • Conventional • Membrane • Ion Exchange • Biological 	<ul style="list-style-type: none"> • Bulk Water • Industrial Water • Clean Water • Demineralized Water 	<ul style="list-style-type: none"> • Joint Venture • Operation & Maintenance • BOO (Build, Own and Operate) • BOT (Build, Operate, Transfer)



OUR HISTORY & MILESTONE



1996

Spin-off from
PT Krakatau Steel



2010

WRP
(Demin Water) *Latinusa Tbk* Operation



2012

Krenceng
Dam Expansion



2013

KBW
Establishment



2014

Supply
Demin Water for MCCI



2018

Cipasauran Dam &
WTP Cidanau
Operation



2019

KTOP &
PPKT Establishment



2020

KPDP Acquisition



2021

Decanter Operation



2022

SPAM Gresik Operation &
Desal-Demin Water
Sumbawa
(Under Construction)



KTI & GROUP PORTOFOLIO

CLEAN WATER



WTP Krenceng 2.000 lps



WTP Cidanau 600 lps



SPAM Gresik 1.000 lps

INDUSTRIAL WATER



Desal-Demin Water Plant Sumbawa
Desal 256 cmh & Demin 65 cmh
(Under Construction)



WTP Demin for PT MCCI
3 x 110 cmh



WRP & WTP Demin for PT LatinusaTbk
30 and 48 cmh



**Demineralized Water Station
Blast Furnace PT KS** 150 cmh



**WWTP Biotreatment
Blast Furnace PT KS** 150 cmh



**WRP Gedung Krakatau Steel
Office Jakarta** 2 cmh

SERVICE (O&M)



SEPS V PT KTI
3 x 900 cmh & 2 x 1.080 cmh



O&M Decanter PT KTI
2 x 25 cmh



Sparepart & Chemical Provider



EPC STP (Sewage Water Treatment)
PT Krakatau Osaka Steel
45 cmh
PT Krakatau Daya Listrik
2 cmh
PT Krakatau Bandar Samudera
6 cmh



**O&M WWTP dan STP
Cold Rolling Mill PT KS**



WWTP Krakatau POSCO 17.000 cmh
Reusing System 7.000 cmh

KTI's INTEGRATED WATER MANAGEMENT & FACILITY

Water Source

- **Krenceng Dam**: an artificial lake with a capacity of 5.4 million m³
- **Cidanau River** : watershed area of more than 22,620 Ha
- **Cipasauran River** : watershed area of more than 4,152 Ha

Intake

- **Cidanau Weir**
- **Cipasauran Weir**

Transmission Pipeline



- **Intake Cipasauran – WTP Cidanau**: 14km
- **Intake Cidanau – WTP Krenceng**: 28km

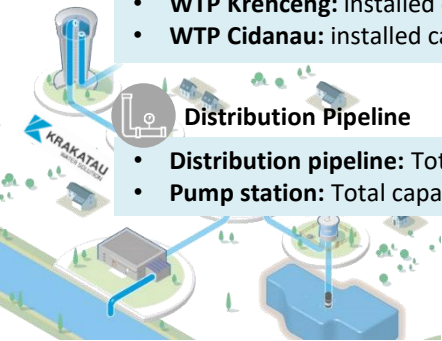
Water Treatment Facilities

- **WTP Krenceng**: installed capacity of 2,000 Lps
- **WTP Cidanau**: installed capacity of 600 Lps

Distribution Pipeline

- **Distribution pipeline**: Total network more than 100km
- **Pump station**: Total capacity more than 2,600 Lps

-  Raw water transmission
-  Clean Water Distribution



SPECIAL WATER EXPERIENCES



PLANT	WTP Demin PT Mitsubishi Chemical Indonesia	WRP and WTP Demin PT Latinusa Tbk	O&M WTP Demin Blast Furnace PT KS
Desain	3 x 110 cmh	30 and 48 cmh	150 cmh
Year Operation	October 2014 – Now	December 2011 – 2021 and 2021 - Now	2017 - 2020
Treatment Process	UF, RO, Mix Bed	Softener, UF, RO, Mix Bed	Ion Exchanger
Product	Demin Water	Demin Water	Demin Water



PLANT	O&M WWTP Biotreatment BF PT KS	Final WWTP PT Krakatau Posco	WRP Gedung Krakatau Steel Jakarta	Desal-Demin Water Plant AMIN. Sumbawa
Desain	32 cmh	17.000 cmd for WWTP & 7.000 cmd for reusing	2 cmh	Desal 256 cmh, Demin 65 cmh
Year Operation	2017 – 2020	2013 - Now	2010 - 2020	(Under Construction)
Treatment Process	Biotreatment	Conventional & Membrane	Membrane Bio Reactor (MBR)	DAF, UF, RO, Mix Bed
Product	Clean Water	Demin Water	Clean Water	Air Desal, Air Demin

PT KRAKATAU TIRTA INDUSTRI CUSTOMER



Customers of PT Krakatau Tirta Industri have various types of businesses such as the Steel Industry, Petrochemical Industry, Cement Industry, Service Industry, etc.

CERTIFICATE



ISO 9001 (Quality Management)

On May 17, 2018 KTI has received ISO 9001 from PT Sucofindo International Certification Services with Certificate No.QSC 01046.



ISO/IEC 17025:2018 (Laboratory)

KTI achieved on September 19, 2018 from KAN.



ISO 14001

On May 17, 2018 KTI received ISO 14001:2015 from PT Sucofindo International Certification Services with EMS Certificate No. 00257.

DAM MANAGEMENT

KTI already has a **Dam Operation Permit Certificate** issued by the Ministry of PUPR Number PR.01.04-Mn/13 of 2016.



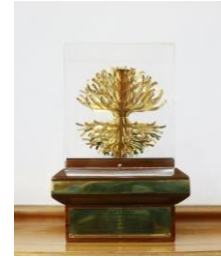
K3 MANAGEMENT



SMK3 CERTIFICATE

KTI received the K3 Management System award certificate from the Ministry of Manpower of the Republic of Indonesia through Decree No. 201 of 2017

AWARDS



KALPATARU

KTI got a Kalpataru Award from Republic of Indonesia Government on 2013 for their role on an integrated management of the Cidanau Watershed



INDONESIA GREEN AWARDS

KTI got an award from The Latofi School of CSR on 2012 for the Green Manufacture category



ZERO ACCIDENT

KTI got an award from Governor of Banten on 2018 for achieving zero accident in the application of the work safety



Thank You

www.krakatautirta.co.id

This presentation has been prepared specifically by Krakatau Tirta Industri. The content of this presentation may not be used, duplicated or transmitted in any form without the written consent from Krakatau Tirta Industri. All rights reserved.